



## 2019 MELGES 32 WINTER SERIES

### AT DAVIS ISLAND YACHT CLUB

With Regattas on January 19-20, February 23-24, and March 16-17

# SAILING INSTRUCTIONS

## 1. RULES

The regatta will be governed by the rules as defined in The Racing Rules of Sailing (RRS), including Appendix V.

## 2. NOTICES TO COMPETITORS

Notices to competitors will be posted on the official notice board(s) located on the west exterior wall on the lower level of the DIYC clubhouse.

## 3. CHANGES TO SAILING INSTRUCTIONS

Any change to the sailing instructions will be posted before 0800 on the day it will take effect, except that any change to the schedule of races will be posted by 2000 on the day before it will take effect.

## 4. SIGNALS MADE ASHORE

- 4.1 Signals made ashore will be displayed from the flagpole at the west end of the property.
- 4.2 When flag AP is displayed ashore, '1 minute' is replaced with 'not less than 45 minutes' in the race signal AP.

## 5. CLASS FLAGS

Class flag will be numeral pennant 1.

## 6. RACING AREAS

Attachment A shows the location of racing areas. Should conditions warrant, the Race Committee may move the race area further south.

## 7. THE SCHEDULE

- 7.1 All boats must be in the water by 0800 on the first race day of a Regatta and shall remain in the water until the end of the Regatta, unless granted prior permission by the Race Committee.
- 7.2 First scheduled warning on Saturday and Sunday of each Regatta: 1000 hrs.

- 7.3 There will be no Warning Signal after 1400 on Sunday of each Regatta.

- 7.4 Five races are scheduled for each Regatta.

## 8. THE COURSE

- 8.1 The diagrams in Attachment B show the courses, including the approximate angles between legs, the order in which marks are to be passed, and the side on which each mark is to be left.
- 8.2 The course identifier, approximate magnetic bearing and distance in nautical miles to the first mark will be displayed from the race committee signal vessel prior to the warning signal for each race.

An example is shown below:

- 4 Number of legs (odd: windward finish; even: leeward finish)

270 Approx magnetic bearing to windward mark

1.2 1.2 nm to windward mark

## 9. MARKS

- 9.1 Windward and leeward marks will be yellow tetrahedrons. The offset mark will be a small orange ball. The starting and finishing marks will be green tetrahedrons and/or RC vessels.
- 9.2 New marks, as provided in SI 12, will be orange tetrahedrons.
- 9.3 If only one leeward mark is present it shall be rounded to port.

## 10. THE START

- 10.1 The starting line will be between a staff displaying an orange flag on the race committee signal vessel at the starboard end and either (a) the course side of the starting mark or (b) a staff displaying an orange flag on a vessel at the port end.

## 11. RECALLS

- 11.1 Individual and General Recall flags will also be displayed by the port end starting line vessel.

These are not official flags under RRS 29. The timing of these flags or lack of these flags shall not be considered grounds for redress, changing RRS 62.1.

- 11.2 After a start the race committee will attempt to hail boats to be scored OCS, UFD or BFD on VHF.
- 11.3 The timing and order of such hails or the failure of a boat to hear the hail shall not be considered grounds for redress, changing RRS 62.1.

## **12. CHANGE OF THE NEXT LEG OF THE COURSE**

To change the next leg, the race committee will lay a new mark, move the finishing line or move the gate and remove the old mark as soon as practicable. When in a subsequent change a new mark is replaced, it will be replaced by an original mark.

## **13. THE FINISH**

- 13.1 The finishing line will be between a staff displaying an orange flag on a race committee vessel and the course side of the finishing mark.
- 13.2 Flag A displayed with no sound while boats are finishing means "No more racing today."

## **14. TIME LIMITS**

- 14.1 The time limit for the first boat to sail the course and finish is 90 minutes.
- 14.2 Boats still racing more than 30 minutes after the first boat sails the course and finishes will be scored TLE (Time Limit Expired) without a hearing. The score will be 2 points more than the last boat to finish. This changes RRS 35, A4, A5, and A11.

## **15. PENALTY SYSTEM**

RRS Appendix V will be in effect.

## **16. PROTESTS AND REQUESTS FOR REDRESS**

- 16.1 Protest forms are available in the Regatta Room. Protests shall be delivered there within the protest time limit which is **45** minutes after the race committee finish boat docks after the last race of the day.
- 16.2 The race committee will post a list of penalties being assigned by the race committee prior to the end of protest time limit. The deadline for requesting redress based on these scores will be either 30 minutes after posting of the penalty notice or the protest time limit, whichever is later. This changes RRS 62.2.
- 16.3 Notices will be posted promptly after the receipt of a protest or a request for redress to inform competitors of hearings in which they are parties or named as witnesses. Hearings will be held in the Regatta Room in approximately the order of

receipt beginning as soon as possible after their receipt.

- 16.4 On the last day of each Regatta a request for redress based on a jury decision shall be delivered no later than 30 minutes after the decision was posted, changing RRS 62.2.
- 16.5 In a protest hearing, the representative from each yacht shall be the owner or the Category 1 driver. Category 3 sailors from the protestor or protestee are not allowed in the protest room or to be in contact with their representative in the protest room. Category 3 sailors from other boats may be allowed in the protest room as a witness.

## **17. SAFETY**

- 17.1 Prior to the warning signal for the first race of each day in which it intends to compete, each boat is requested to check in by VHF or sail by the race committee signal boat and hail its sail number.
- 17.2 A boat retiring from a race or leaving the racing area early shall promptly notify the race committee either by hail, over VHF, or by telephone to the Clubhouse at (813) 251-1158.

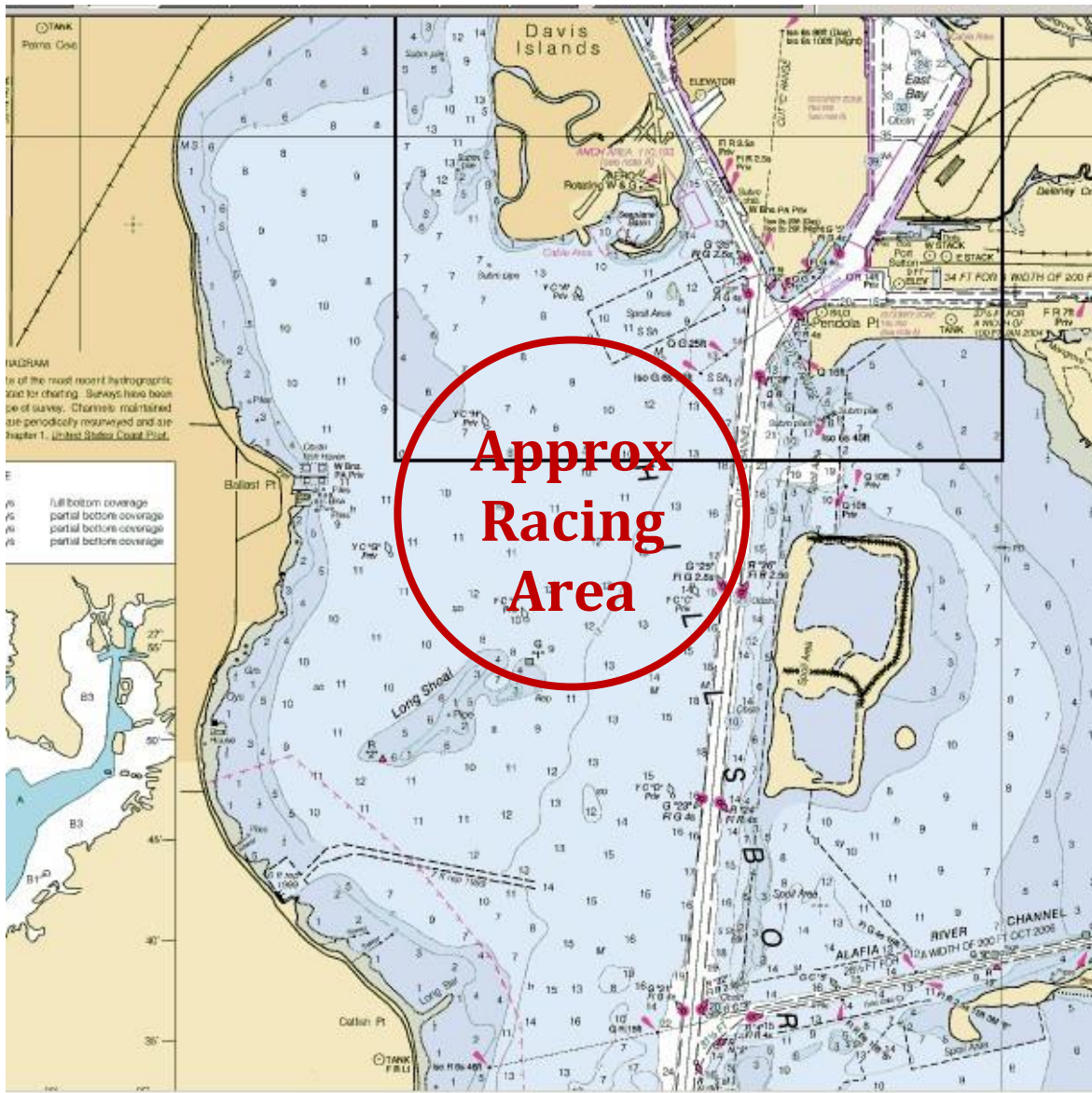
## **18. RADIO COMMUNICATION**

A boat shall neither make nor receive voice or data transmissions while racing not available to all boats, except in an emergency.

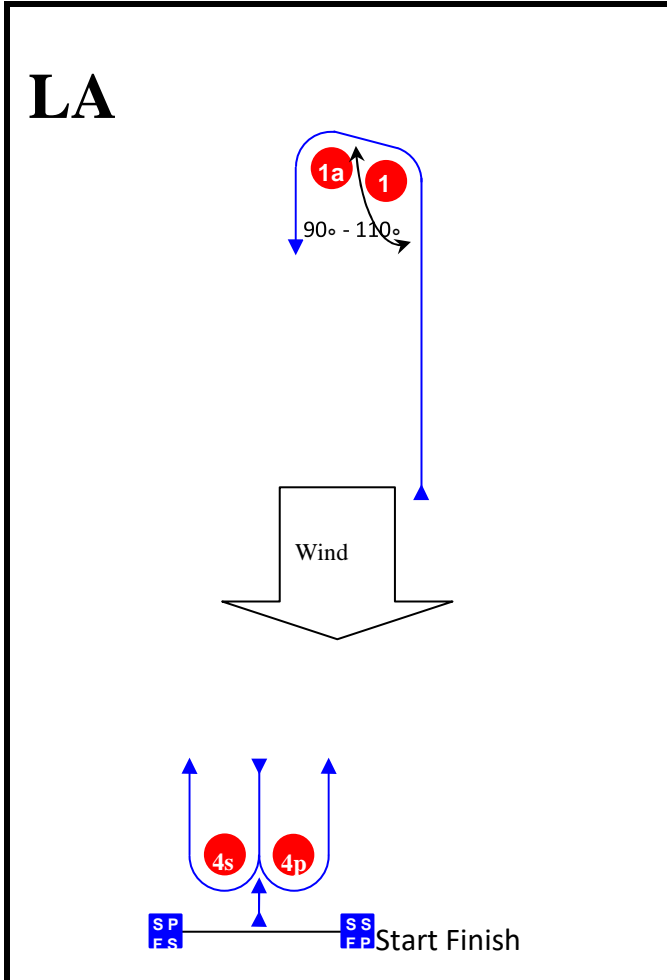
## **19. SCORING**

- 19.1 Five races are scheduled for each regatta, 15 total for the series
- 19.2 For each Regatta:
  - i. A boat's score will be the total of all her race scores
  - ii. One completed race is necessary to constitute a regatta.
- 19.3 To be scored for the Melges 32 Winter Series:
  - i. Competitors must register, pay and compete in all three regattas.
  - ii. The skipper must be the same in all three regattas unless approved in writing by the Race Committee.
  - iii. The same boat must be used in all three regattas unless approved in writing by the Race Committee.
  - iv. Appendix A9 of the RRS will be used to score the Melges 32 Winter Series.
  - v. A boat's Melges 32 Winter Series score will be the total of all her race scores.

# ATTACHMENT A – APPROXIMATE RACING AREA

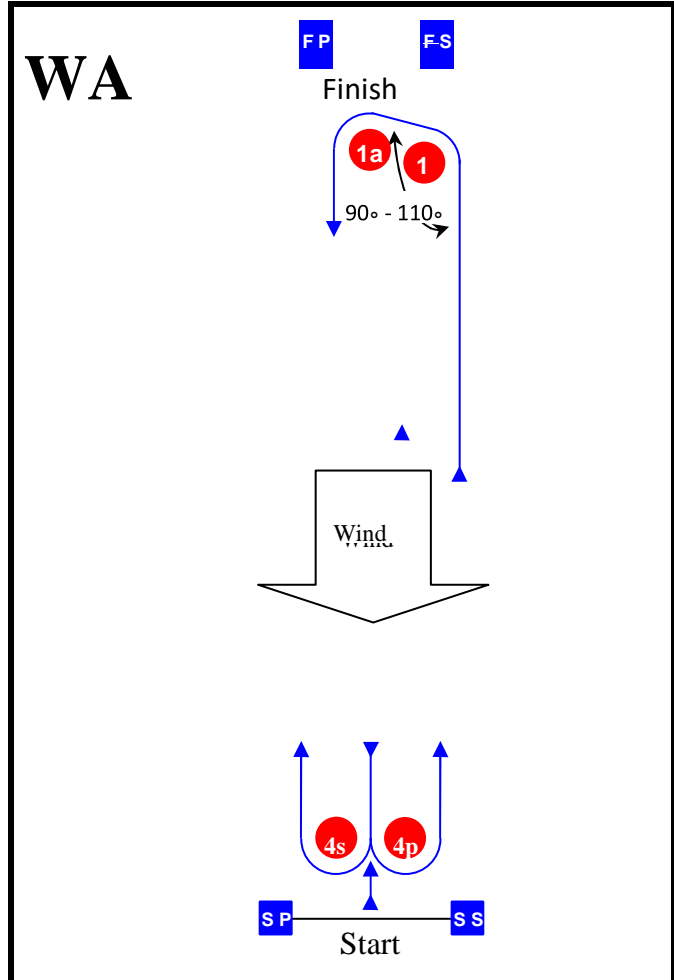


## ATTACHMENT B – COURSE DIAGRAMS



Course: Leeward finish

Signal	Mark Rounding Order
LA2	Start – 1 – 1a – 4s/4p – 1 – 1a – Finish
LA3	Start – 1 – 1a – 4s/4p – 1 – 1a – 4s/4p – 1 – 1a – Finish
LA4	Start – 1 – 1a – 4s/4p – 1 – 1a – 4s/4p – 1 – 1a – 4s/4p – 1 – 1a – Finish



Course: Windward Finish

Signal	Mark Rounding Order
WA2	Start – 1 – 1a – 4s/4p – Finish
WA3	Start – 1 – 1a – 4s/4p – 1 – 1a – 4s/4p – Finish
WA4	Start – 1 – 1a – 4s/4p – 1 – 1a – 4s/4p – 1 – 1a – 4s/4p – Finish